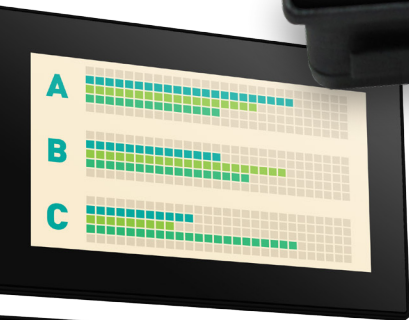


# PanelPilotACE

Off the shelf hardware and intuitive design software for rapid development of your next display project





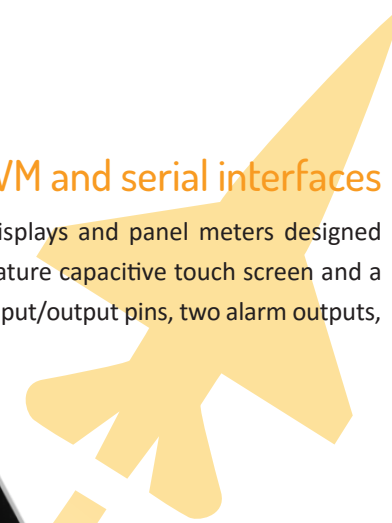
Off the shelf hardware and intuitive design software for rapid development of your next display project

## Code-free development of advanced display applications

From background images to text elements, analog style meters, touch screen navigation, complex logic statements, serial communications, data logging, trend graphs and maths functionality, PanelPilotAce Design Software allows users to build multi-screen interfaces without writing a line of code. The PanelPilotACE Design Studio software is free and available to download from [www.panelpilot.com](http://www.panelpilot.com).

## 4.3" & 7" PanelPilotACE display with analog, digital, PWM and serial interfaces

The SGD 43-A and SGD 70-A are the first in a range of PanelPilotACE compatible displays and panel meters designed specifically to run projects created in the PanelPilotACE Design Studio. The displays feature capacitive touch screen and a wealth of hardware interfaces including four 16 bit bi-polar analog inputs, eight digital input/output pins, two alarm outputs, four PWM outputs and RS232 serial port.



The software includes a library of pre-defined elements such as meters, buttons and switches. Alternatively you can create your own content by combining behavioral and graphical elements. The software includes support for transparency and multiple layers.

Hardware elements are dragged from the library into a function builder where associations with graphical elements (such as a needle on a meter) can be defined. Set scaling for analogue inputs, define alarm triggers and behaviors for digital I/O.



The software includes a 'Preview in Emulator' function which emulates the hardware inputs and outputs allowing you to test projects prior to upload. Projects are uploaded to the display via USB.



### SGD 43-A Specifications

Display	4.3" TFT with 262k colors
Touch screen	Capacitive touch screen
Resolution	480 x 272px
Processor	Freescale i.MX283 (454MHz, 32bit, ARM 9)
Operating temperature	32 to 104°F (0 to 40°C)
Supply	5 to 30V d.c. (300mA typical at 5V d.c.)
Outside Dimensions	119 x 80 x 20mm (4.69 x 3.14 x 0.78")

### SGD 70-A Specifications

Display	7.0" TFT with 16.7M colors
Touch screen	Capacitive touch screen
Resolution	1024 x 600px
Processor	Freescale i.MX6Solo (ARM Cortex A9 @800MHz & Cortex M4 @227MHz)
Operating temperature	32 to 104°F (0 to 40°C)
Supply	5 to 30V d.c. (500mA typical at 5V d.c.)
Outside Dimensions	186 x 122 x 21mm (7.3" x 4.3" x 0.8")

## Custom Design Service

If you're really under pressure to finish a design, why not make use of Lascar's Custom Design Service for PanelPilotACE to deliver your solution? Provide us with a description of your display requirements and we can complete the design for you. Forget months of coding and an enormous development bill. Lascar's unique PanelPilotAce software turns months of work into weeks, days or even hours giving you the quickest route to your new display at a fraction of the cost of typical custom design.

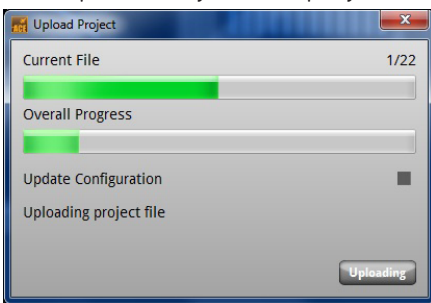
# Easy to Get Started

## 1. Design your interface



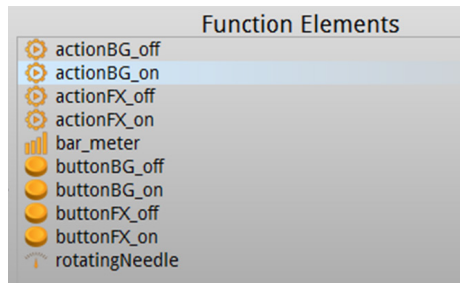
Add graphical elements to create a unique looking project with navigation, animation and images.

## 4. Upload to your display



Connect your display via USB and upload your project.

## 2. Configure your hardware



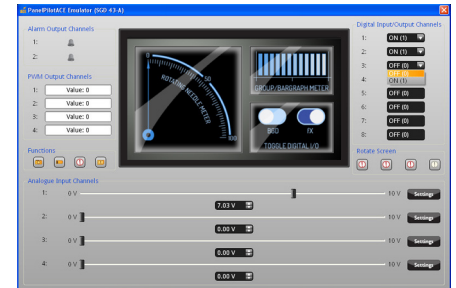
Assign behaviors to the graphical elements to interface with the hardware inputs and outputs.

## 5. Panel mount and connect to your application



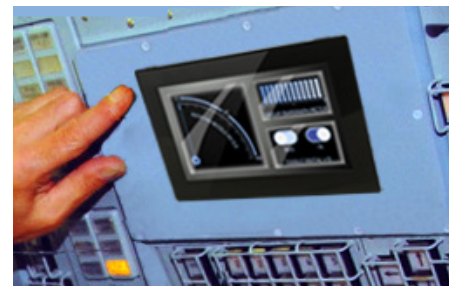
Fix in your panel and wire to the display using screw terminals and dual-in-line pins.

## 3. Emulate in the software



Test your project in software to see the graphical and hardware elements working together.

## 6. Application complete



Your PanelPilotACE is now ready to use.

## Four channel temperature monitoring and logging with PanelPilotACE

S43-TP

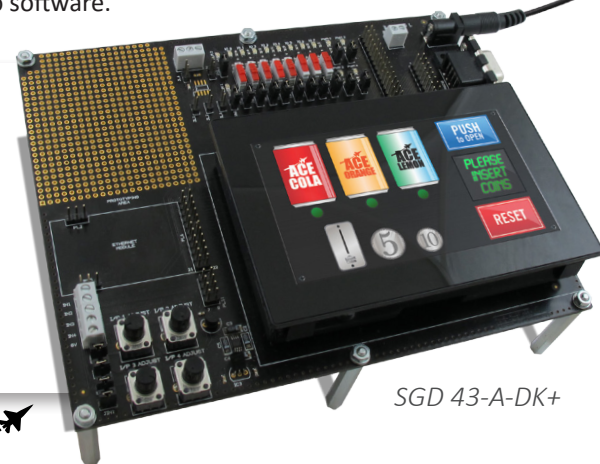
The S43-TP and S70-TP are accessories to the PanelPilotACE range of compatible displays and panel meters and are compatible with all PanelPilotACE display modules. The S43-TP and S70-TP mount on the rear of the PanelPilotACE and provide up to four thermistor inputs which can then be utilized within the free PanelPilotACE Design Studio software to measure, display, log and graph temperature readings.

The S43-TP and S70-TP are designed to work seamlessly with Lascar Electronics' EasyLog thermistor probes which are available in a variety of lengths and accuracy specifications as well as bottle formats for use in vaccine monitoring applications. Other thermistor types can be used by adjusting the calculation values in the Design Studio software.

## Development

### Get your project off the ground

The development kits, SGD 43-A-DK+ and SGD 70-A DK+ are the best choice if you are starting to develop on the PanelPilotACE platform. It includes all you need to begin: a PanelPilotACE display module, a development board, and a USB cable. The board itself provides switches, dials, LEDs and screw terminal connections for all the input and output functionality of your PanelPilotACE.



SGD 43-A-DK+



www.panelpilot.com



**UK**  
Module House  
Whiteparish, Salisbury  
Wiltshire, SP5 2SJ  
UNITED KINGDOM  
T +44 (0) 1794 884567  
E sales@lascar.co.uk



**USA**  
4258 West 12th Street  
Erie, PA 16505  
UNITED STATES  
T +1 (814) 835-0621  
E us-sales@lascarelectronics.com



**HK**  
8th Floor, China Aerospace Centre  
143 Hoi Bun Road  
Kwun Tong, Kowloon  
HONG KONG  
T +852 2389 6502  
E sales@lascar.com.hk  
www.lascar.com.hk